

VELA

) (*Dorchester Collection*

DUBAI

by OMNIYAT





RESIDENCE DETAILS

PROJECT NAME:	VELA, Dorchester Collection, Dubai	PRICE:	Provided Upon Request
UNIT OF INTEREST:	1601	TOTAL SIZE:	11,691 sq.ft
FLOOR:	16 th	PARKING:	5
BEDROOMS:	4	VIEWS:	Marina & Burj Khalifa

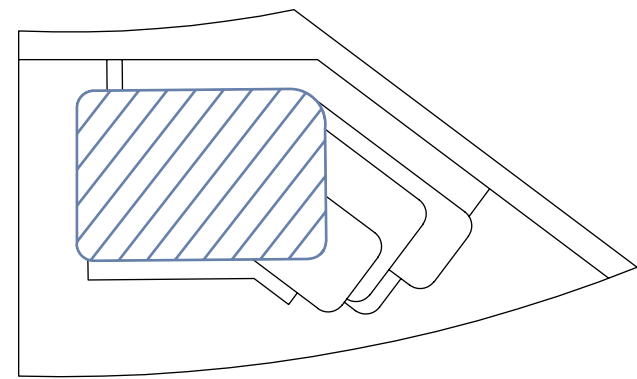
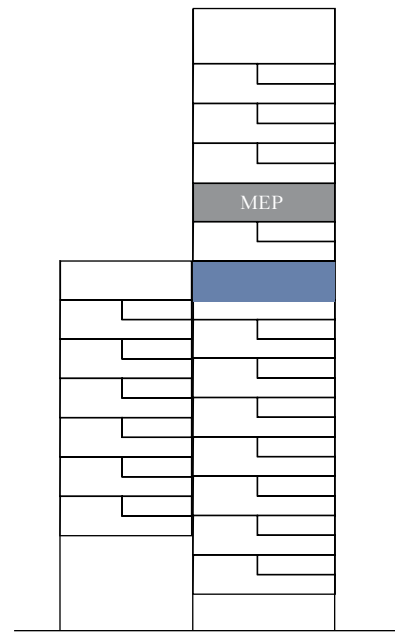
PAYMENT PLAN

Installment No.	Payment Milestone	Payment (%)
1	Booking Form Effective Date - Secured by Managers Cheque	5%
2	On SPA effective date	20%
3	12 Months from SPA effective date	10%
4	18 Months from SPA effective date	5%
5	24 Months from SPA effective date	5%
6	30 Months from SPA effective date	5%
7	36 Months from SPA effective date	10%
8	On project completion date	40%
	Total	100%

VELA

Dorchester Collection

DUBAI



SOUTH PENTHOUSE 1601

4 Bedrooms | 5 Parking space

Residence Area: 5,616.18 sq.ft 521.76 sq.m

Terrace Area: 6,074.83 sq.ft 564.37 sq.m

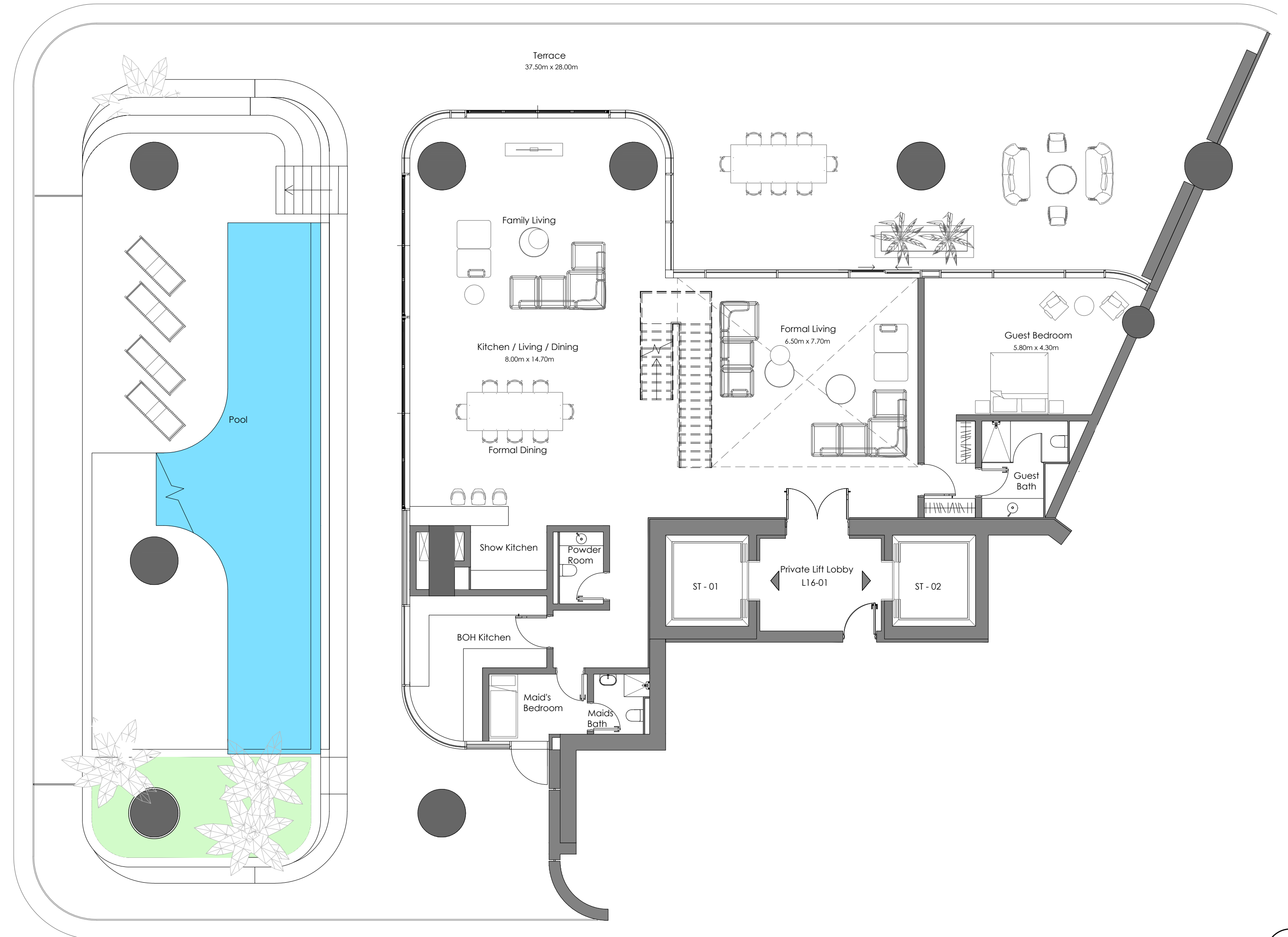
Total Area: 11,691.01 sq.ft 1,086.13 sq.m



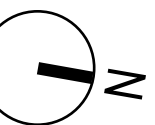
Marasi Marina



Burj Khalifa



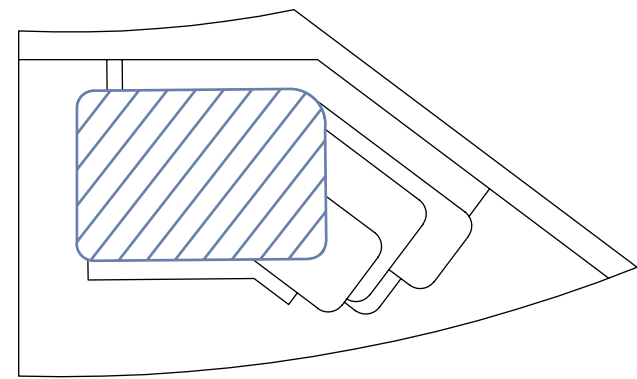
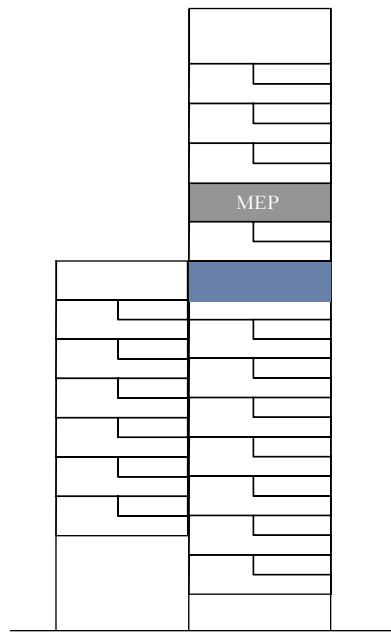
LOWER FLOOR



VELA

Dorchester Collection

DUBAI



SOUTH PENTHOUSE 1601

4 Bedrooms | 5 Parking space

Residence Area: 5,616.18 sq.ft 521.76 sq.m

Terrace Area: 6,074.83 sq.ft 564.37 sq.m

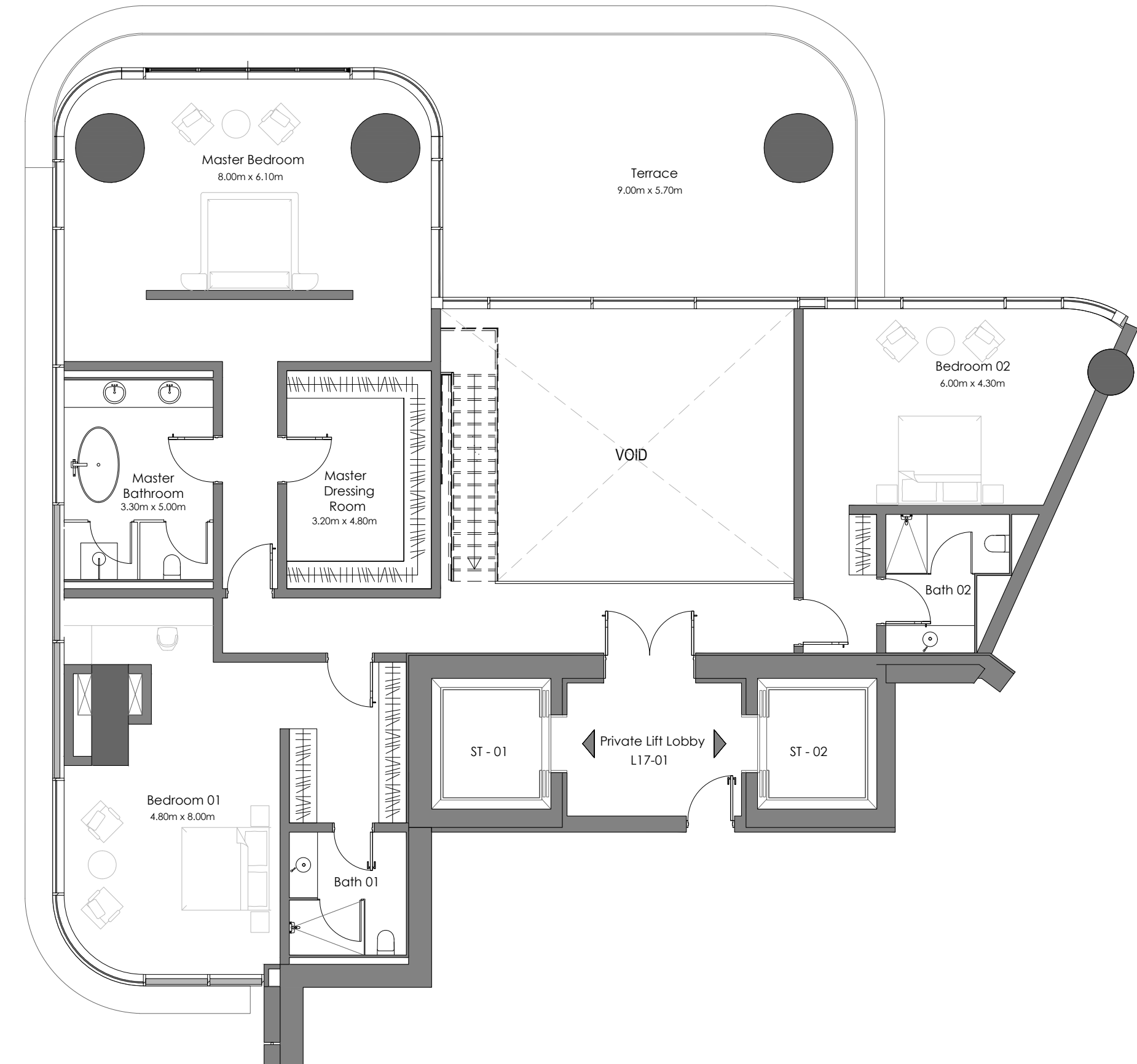
Total Area: 11,691.01 sq.ft 1,086.13 sq.m



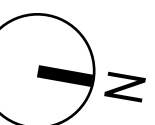
Marasi Marina



Burj Khalifa



UPPER FLOOR



OMNIYAT